

Cloud FastPath by Tervela enables you to automatically and securely transfer your data and permissions to Dropbox from other storage types or platforms



Create point-to-point, secure data transfers from your sources directly to Dropbox and easily simulate, configure, schedule, and run data transfer jobs



Migrate data to Dropbox as quickly as possible through WAN optimization, parallel loading, and Dropbox API call optimization



Automatically preserve or create desired file sharing set-up in Dropbox with flexible and scalable user and group permission mapping



Discover and analyze file servers and other cloud storage system content and permissions before migrating to Dropbox. Filter based on file age, type, last modified, size, owner, and more.



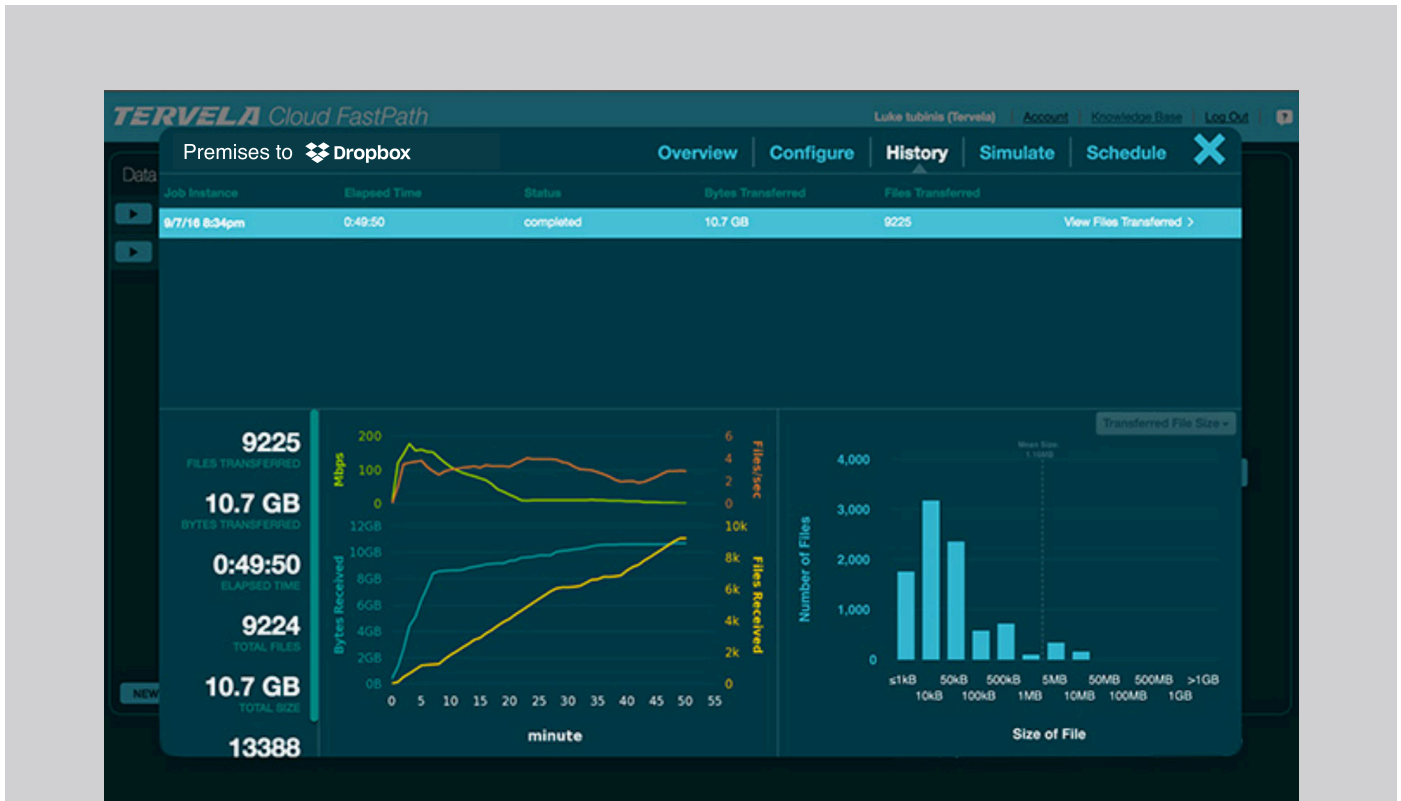
Monitor file transfer jobs in-flight with real-time reporting, visualization, and event logging



Validate migration success with comprehensive and downloadable transfer reports

“Tervela provides a simple, fast, secure, automated solution for migrating content into Dropbox Business. This significantly reduces the impact migrations can have on business operations while enabling a centrally managed and executed migration.”

Eric Schnadig
CEO of Tervela



Dropbox Business simplifies the way people work together, while providing IT with the visibility, security, and control their companies require:

- Fast and secure data migrations through API optimization
- Best-of-breed SmartSync capabilities
- Protected permission structures in team folders

Cloud FastPath is a best-in-class data migration solution that provides:

- Batch upload to enable fast connection to cloud apps (speed optimization)
- Allow for complex permissioning from legacy and cloud sources
- A simple point-and-click web service that automates file migrations
- Robust tools to map for more complex migrations